

INNOVANT

Monitor Arms

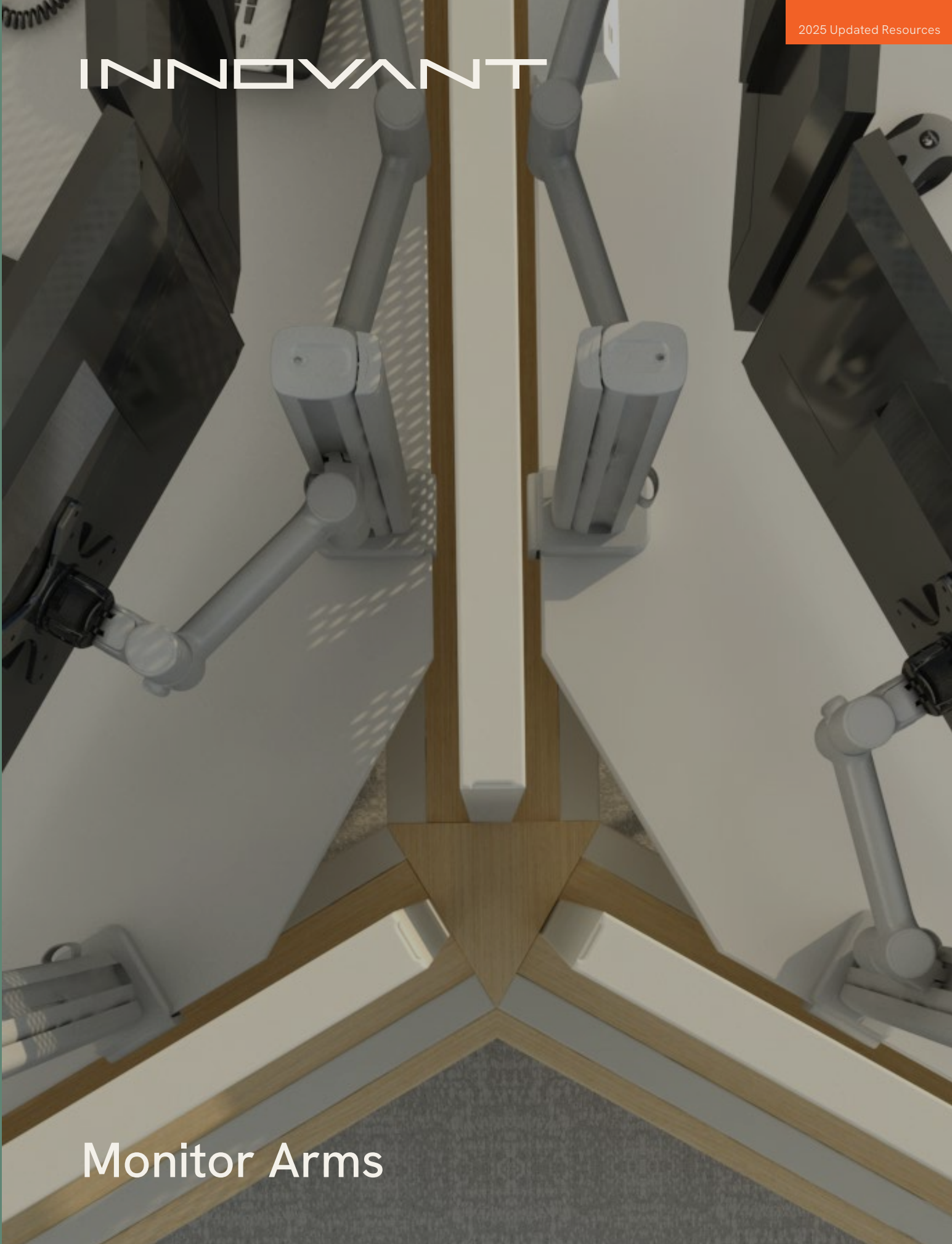


Table of Contents

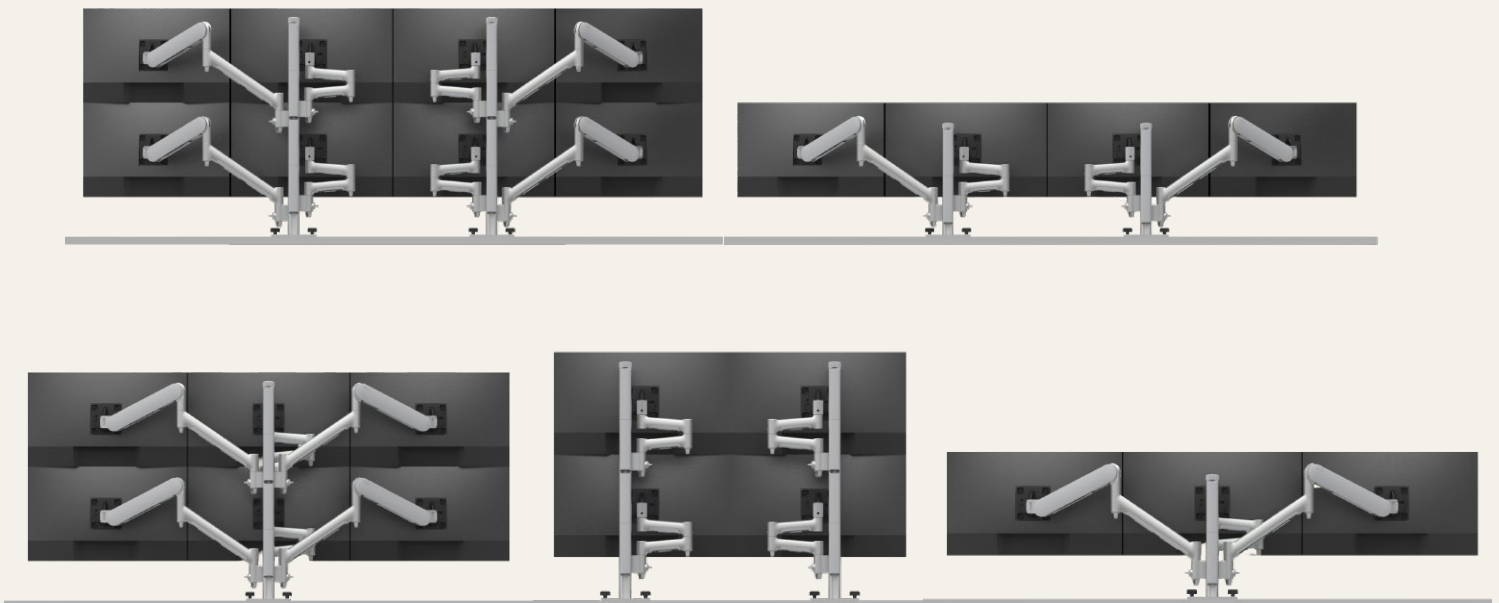


Monitor Arms by Innovant	3
Features & Capabilities	4
Mounting Options	5
Mounting Heads and Accessories	6
Standard Available Arms	7

Monitor Arms by Innovant

Monitor Arms by Innovant is a sophisticated and stylish display mounting system for LCD monitors up to 40lbs. Designed for integration atop all Innovant furniture products, our arms can also be intelligently specified to prevent collisions with adjacent monitor arms and privacy panels on adjustable height desks. Innovant's monitor arms' modular parts enable the creation of a broad array of mounting solutions with independent height adjustment for each arm.

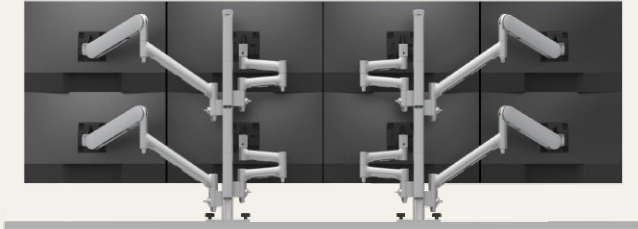
Technology is rapidly evolving and Innovant's Arm ensures that investments made today will continue to benefit users in the future. The ability to utilize interchangeable parts to adapt and upgrade mounting arrangements is an integral benefit of the product. At any time, users can choose from Innovant's list of recommended configurations or select from various posts, arms and accessories to create or modify a workspace display.



From one to eight monitor arrangements, Innovant monitor arms provide virtually endless display configurations for a truly tailored experience.

The product offers complete user-adjustment and positioning of monitors to create the optimal ergonomic display.

Monitor Arm Features & Capabilities



Dynamic Displays

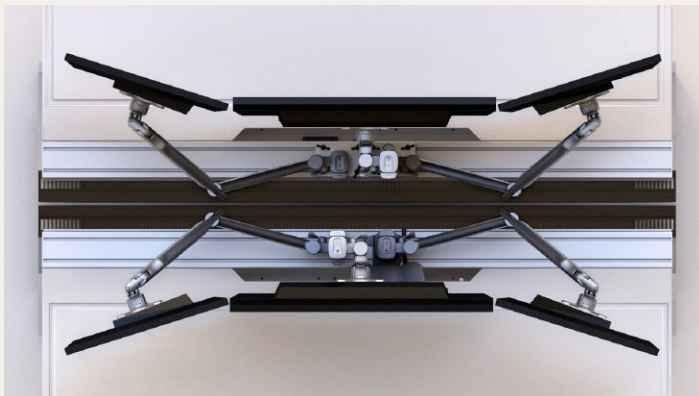
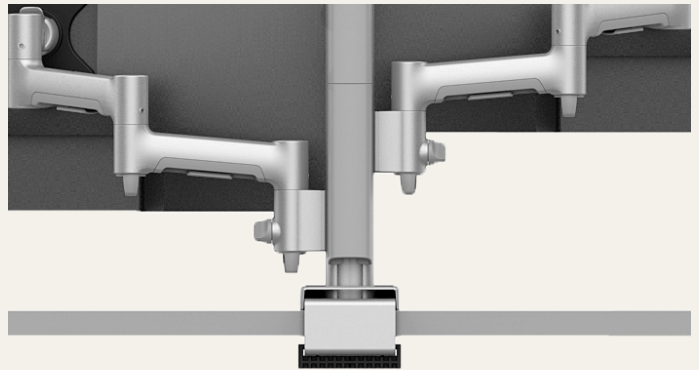
Multi-Tier & Multi-Screen

Innovant arms can be configured in multiple tiers and arrangements across the footprint of the worksurface to suit a wide range of applications. Innovant arms can accommodate screens up to 49" (1244.6 mm).

Adjustment and Alignment

Easy Vertical Modifications

Innovant arms can be adjusted vertically on support posts and locked into place with a simple lever. Spring-assisted arms add fine-tune positioning of monitors to create a perfectly aligned multi-screen display.



Controlled Footprint

Anti-Collision Configurations

Designed for multi-screen setups, Innovant Arms prevent collisions with nearby height-adjustable desks. Variable arm lengths and rotation restrictors ensure optimal monitor fit and alignment within each desktop footprint.

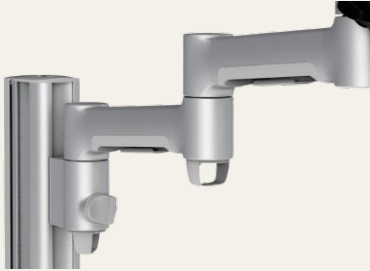
Track Mounting

Easy Horizontal Modifications

Posts connect to the optional accessory mounting beam at the back of worksurfaces. Simple thumb screws allow for rapid installation and lateral repositioning. Speed of installation and relocation is the fastest in the trading desk market and the rigidity of the desk frame prevents monitor vibration.



Monitor Arm Features & Capabilities



Quick Lock Lever

Allows users to quickly adjust the vertical position of arms on posts.



Visual Counterbalance Gauge

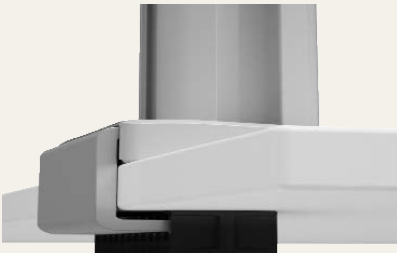
Standard and Heavy Duty Dynamic arms have simple tension adjustment with a visual display.



Advanced Cable Management

Channels within the monitor arms and posts allow cabling to remain hidden but accessible.

Mounting Options



C-Clamp

Universal solution applicable on most Innovant desks.



Beam Mounting Plate

For use with Innovant's AX150 Mounting Beam.



Bolt Through

Chosen when edge mounting is not possible and position is fixed.



Grommet Mount

Offers similar features as the bolt through with the additional benefit of a wire pass-through.



F-Clamp

Applicable on CROSS, beSpoke, and FORM_office. Ideal for use with large or heavy monitor arrays



Heavy Duty F-Clamp

Applicable on CROSS, beSpoke, and FORM_office. Ideal for use with large, heavy monitor arrays with more than two tiers.

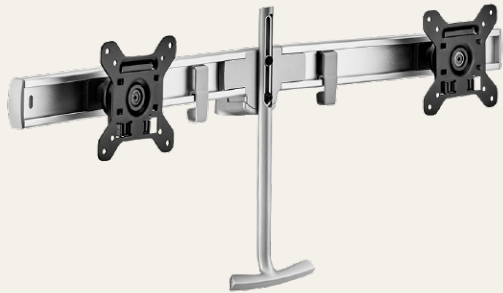
Mounting Heads & Accessories



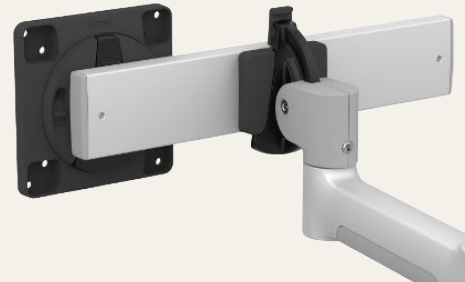
Standard VESA Head
with Quick Release Mechanism
Allows for the tool-free reconfiguration and replacement of monitors.



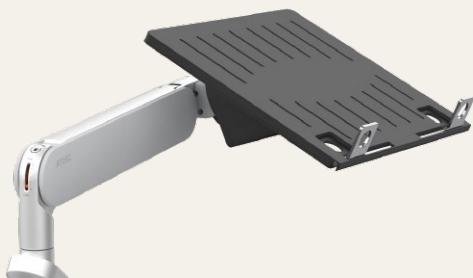
Heavy Duty VESA Head
with Quick Release Mechanism
Allows for the tool-free reconfiguration and replacement of heavy duty monitors.



Dual Screen Crossbar
The Crossbar replaces the single monitor VESA mount to provide single arm support and adjustment for two monitors up to 27" (685 mm) with a combined weight of 31lbs (14 kg) or less.



Monitor Slider
The monitor slider is designed to provide an additional range of display horizontal adjustment in multi-screen configurations, making it easier to set the optimal focal distance without leaving a gap between monitors.



Laptop Tray
This laptop tray solution allows users' laptop monitor to be at an optimal ergonomic eye-level, eliminating their need for a second monitor. Suits devices up to 18lb (8 kg) and screen size 18" (457 mm).

No Link Arm

- Fixed positioning with swivel, pan, and tilt adjustability.
- Typically used in applications where focal distance is fixed.
- Supports 22lbs (9.9 kg) for curved screens and 26.5lbs (12 kg) for flat screens.
- With the use of a heavy duty VESA head, the no link arm supports 26.5lbs (12 kg) for curved screens and 40lbs (18 kg) for flat screens.



Short Link Arm

- Articulates forward/backward and left/right
- Ideal for multi-row and multi-display setups with different display sizes.
- Supports 22lbs (9.9 kg) for curved screens and 26.5lbs (12 kg) for flat screens.
- With the use of a heavy duty VESA head, the short link arm supports 26.5lbs (12 kg) for curved screens and 31lbs (14 kg) for flat screens.

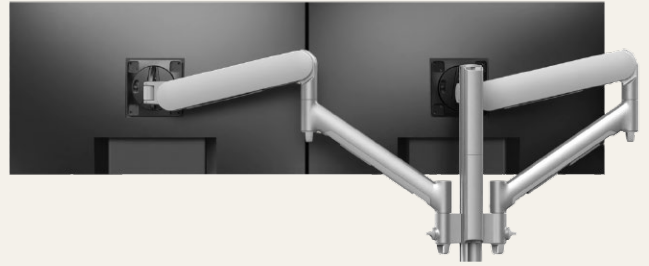
Long Link Arm

- Articulates forward/backward and left/right.
- Provides further reach forward/backward than short link arm.
- Ideal for specific multi-monitor configurations that require extra reach.
- Supports 20lbs (9 kg) for both curved and flat screens.



Spring Arm

- Articulates up/down, forward/backward, and left/right.
- Increases flexibility for easier arrangement of multi-screen setups.
- Ideal for workspaces where frequent monitor adjustments are needed.
- Supports up to 17.6lb (7.9 kg) for both curved and flat screens



Heavy Duty Spring Arm

- Provides spring arm capabilities with more weight capacity.
- Supports up to 35lbs (15.8 kg) for flat screens and 26.5lbs (12 kg) for curved screens.
- Pairs with a heavy duty VESA mount capable of managing the weight of heavier monitors.

Ora Arm

- Complete one-piece solution for single screen setups.
- Articulates up/down, forward/backward, and left/right.
- Ideal for workspaces where quick setup is needed.
- Supports up to 17.6lb (7.9 kg) for both curved and flat screens.



INNOVANT

440 Park Ave South, 9th FL
New York, NY 10016

212.929.4883
info@innovant.com
@innovant_inc

innovant.com

© 2025 Innovant, Inc. All rights reserved.